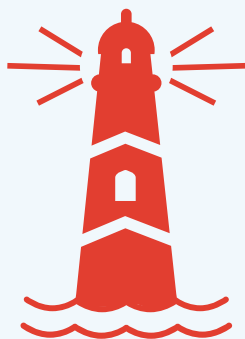


HARVARD IN MASSACHUSETTS



2023
**FACTS &
IMPACT**



H
Welcome!
Please check in with
Visitor Services.
←



“Harvard’s work begins right here in Massachusetts. The University is fortunate to benefit from the extraordinary capacities and strengths of the region. Extensive partnerships throughout the Commonwealth enable us to advance our mission—from the teaching that happens every day on our campus to the groundbreaking discoveries that hold the promise of a better future. We are emboldened to seek answers to the greatest questions facing humanity, in part, because we are embedded in one of the greatest innovation ecosystems in the world.

ALAN GARBER
PRESIDENT
HARVARD UNIVERSITY



ABOUT THE COVER

Harvard is home to a network of museums and living collections that are open and available to the general public. In 2023, the Harvard Art Museums announced a new free admissions policy for all visitors, significantly expanding access to the museums’ collections, exhibitions, and research across public audiences. Recognizing the important role that cultural institutions play in the region, additional Harvard museums maintain free admission policies for Massachusetts residents.

Visitor information can be found here: harvard.edu/campus/museums

Contents

2

Education

Expanding access to education and innovative learning opportunities. Supporting students with generous financial aid. Contributing to the vitality of the region’s workforce and knowledge-based economy.

4

Research

Attracting hundreds of millions of dollars in research funding to Massachusetts. Fueling science, medical discoveries, and spending in the regional economy.

6

Innovation

Driving discoveries that launch new ventures, attract private investment, and make a positive social impact. Sparking the region’s entrepreneurial spirit.

8

Employment & Workforce Development

Anchoring a knowledge-based economy as one of the state’s largest employers. Accelerating workforce development at Harvard and beyond through market-driven programs and initiatives.

10

Impact

Supporting local businesses through purchasing and tourism. Collaborating with state and local partners to help solve some of the region’s most pressing challenges.

12

Sustainability

Working to address climate change through science-backed and scalable solutions. Helping the region lead through a sustainable campus.

14

College & Career Pathways Programming

Providing educational programs, resources, and learning opportunities for public school students to navigate and explore career options. Empowering students to plan for their futures in college and beyond.

18

Leading Locally

Advancing partnerships and collaborations that contribute to the strength and well-being of the cities of Boston and Cambridge. Shaping a vibrant and shared future.



FOR MORE INFORMATION

about the facts and figures contained in this document, please visit community.harvard.edu/sources.





Education

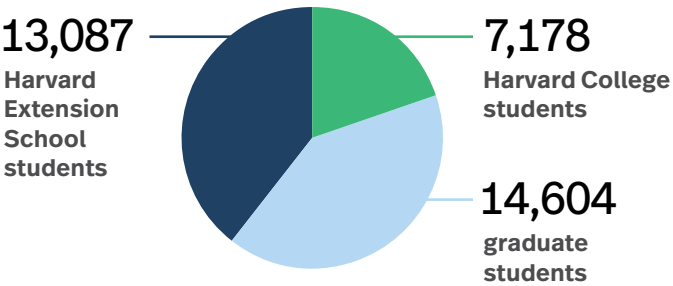
Expanding access to education and innovative learning opportunities. Supporting students with generous financial aid. Contributing to the vitality of the region’s workforce and knowledge-based economy.

STUDENT POPULATION

2022–2023 Academic Year

34,869

students at Harvard



10,425

students from Massachusetts at Harvard

Students by County

Barnstable	76	Norfolk	1,005
Berkshire	25	Plymouth	168
Bristol	94	Suffolk	2,425
Essex	302	Worcester	204
Hampden	44	Dukes, Franklin, Nantucket	33
Hampshire	44		
Middlesex	6,005		



EXPANDING ACCESS TO EDUCATION

Harvard Extension School

Part of the Harvard Division for Continuing Education, the Harvard Extension School enables students and adult learners to pursue certificate, undergraduate degree, and graduate degree programs through a combination of online and on-campus classes.

800+

courses in over 60 subjects

800+

degrees awarded each year



10K+

degrees awarded across all Harvard schools during the 2022–2023 academic year

FINANCIAL AID

Building on the University’s commitment to expanding access to an affordable college education, the Harvard Financial Aid Initiative (HFAI) ensures students can attend Harvard College regardless of economic obstacles.

Harvard Financial Aid Initiative

\$0

families with annual incomes of less than \$85,000 pay nothing toward their child’s education

55%

of undergraduates receive Harvard need-based grant aid

100%

of students can graduate debt-free

\$3B+

in grant aid distributed to undergrads since HFAI was launched in 2004

2022–2023 Academic Year

\$246M

in institutional need-based grant aid provided to Harvard College students



\$56,793

average award to Massachusetts students enrolled in Harvard College receiving aid

1,175

Massachusetts students enrolled in Harvard College

471

Massachusetts students enrolled in Harvard College received need-based scholarship assistance

\$26.8M

in scholarship aid awarded to Harvard College students from Massachusetts

“Coming from a first-generation low-income family, finances were a top priority when deciding where I went to college. That is why I was prepared to sacrifice my preferences in schools to ensure my family wouldn’t be burdened with debt. It wasn’t until I opened my Harvard acceptance letter that I realized that my top choice could also be my cheapest choice, and for that, I am forever grateful.”

GAGE KINGMAN
HARVARD COLLEGE | CLASS OF 2024
TAUNTON, MA

BEYOND CAMPUS: ALUMNI & PUBLIC SERVICE

Harvard alumni are deeply engaged in and are committed to making a positive impact in their communities. Many have dedicated their careers to public service or have served as board volunteers of nonprofit organizations.

51,500

estimated Harvard alumni living in Massachusetts

26

Harvard alumni and affiliates are members of the 193rd General Court of the Commonwealth of Massachusetts

50

Harvard alumni are members of the 118th United States Congress

A Harvard alum or faculty member serves on the board or on the management team of 24 of the 25 largest nonprofit organizations in Massachusetts.

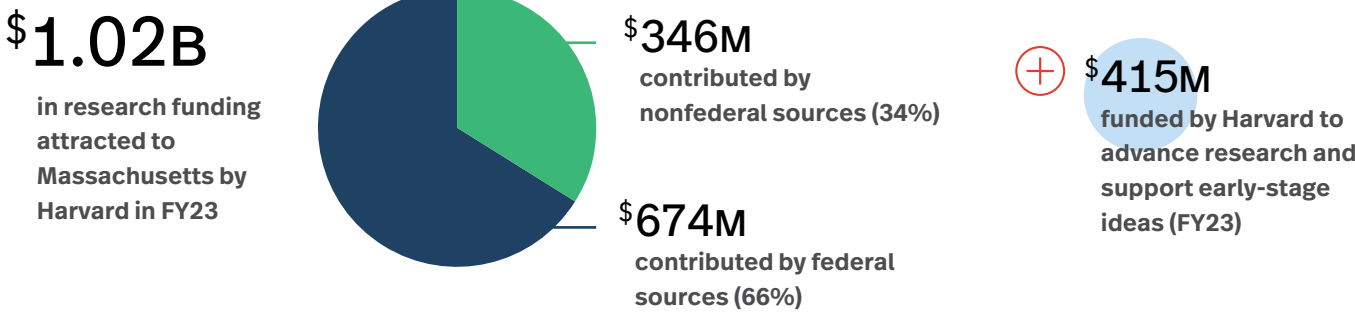


Research

Attracting hundreds of millions of dollars in research funding to Massachusetts. Fueling science, medical discoveries, and spending in the regional economy.

RESEARCH FUNDING

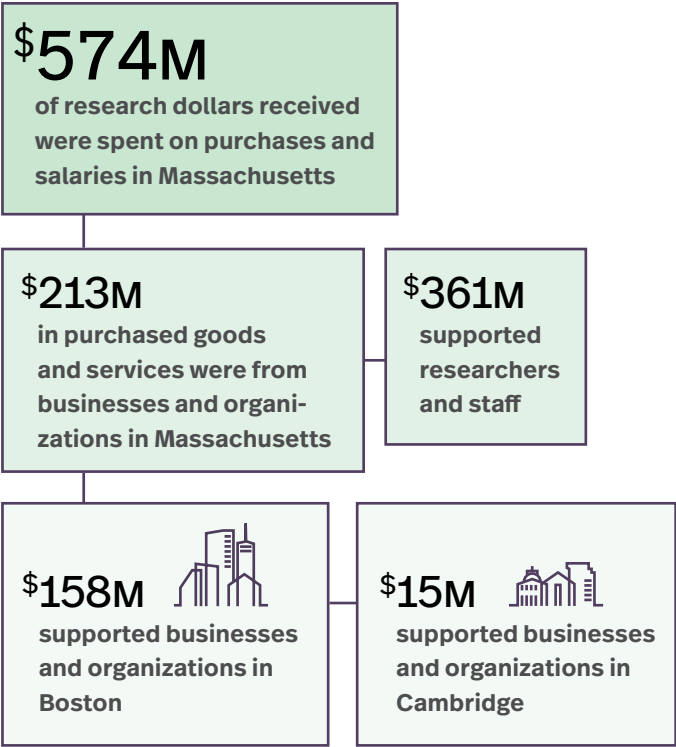
Expanding Knowledge, Anchoring Massachusetts Industries and Innovation



LOCAL JOBS, LOCAL PURCHASING

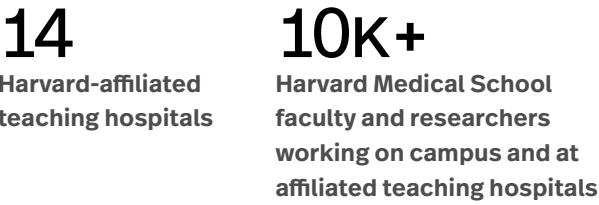
The research funding Harvard receives supports local jobs, businesses, and organizations.

FY23



EDs and MEDs Together

Through a collaborative approach, Harvard, its 14 affiliated teaching hospitals, and its sister research institutions, bring together thousands of faculty, students, and staff to generate knowledge, advance discoveries that expand research into diseases, and lay the foundation for new therapies. In FY23, these institutions attracted **\$1.9 billion** in NIH funding to Massachusetts.



PARTNERING TO ADVANCE RESEARCH AND INNOVATION IN MASSACHUSETTS

Harvard is proud of its collaborations with the Commonwealth of Massachusetts that advance a range of research priorities critical to Massachusetts residents. In the past decade, the University has partnered with 14 state agencies, including the Massachusetts Life Sciences Center, on 77 research projects focused on addressing environmental, educational, and public health issues.

FY14–FY23

77
research projects advancing state priorities

14
Commonwealth of Massachusetts partners

Harvard's Thompson Lab: Supporting Massachusetts' Conservation and Climate Change Initiatives

The Thompson Lab at Harvard Forest has partnered with the Commonwealth of Massachusetts to advance the state's Forests as Climate Solutions initiative aimed at accelerating progress toward land conservation goals and developing forest management guidelines based on climate science. Leveraging the research expertise of the lab, Jonathan Thompson, Harvard Forest director of research, serves on a committee with the state's Executive Office of Energy and Environmental Affairs that is recommending new forest management practices aimed at maximizing carbon storage and climate resiliency in Massachusetts. The Thompson Lab also leads a major study of Massachusetts' forest carbon resources that will outline possible alternative scenarios of climate change, land use, and alternative energy development. Providing pathways to achieving emissions reductions, this research has already been used to support the state's Clean Energy and Climate Plans for 2025 and 2030.

“The Thompson Lab is committed to studying long-term and broad-scale changes in forest ecosystems. We are proud to partner with the Commonwealth of Massachusetts, applying the research and expertise generated on campus to further the state's Forest as Climate Solutions initiative and climate change goals. This significant work will benefit communities across Massachusetts and beyond.”

JONATHAN THOMPSON
RESEARCH DIRECTOR, HARVARD FOREST



Innovation

Driving discoveries that launch new ventures, attract private investment, and make a positive social impact. Sparking the region’s entrepreneurial spirit.

AN ENGINE OF INNOVATION

Harvard’s research enterprise yields discoveries with the potential to improve lives, transform industries, and make a positive social and economic impact. Through the Office of Technology Development, the University advances science, fosters innovation, and translates new inventions into useful products that are available and beneficial to society.

406

innovations reported by Harvard researchers in FY23

194

new patent applications filed by Harvard in FY23

5,322

patents held by Harvard as of July 1, 2023

160+

startups launched around Harvard research innovations in the last decade

1,116

technology licenses are active with 750 industry partners as of July 1, 2023



Harvard Innovation Labs
Student i-lab | Launch Lab X
Pagliuca Harvard Life Lab

Part of the University’s research enterprise, the Harvard Innovation Labs transform ideas into new startups and businesses. Since 2011, when the i-lab opened its doors, 10,000 students, faculty, and alumni from across diverse disciplines have come together to work on solving some of the world’s most challenging problems.

\$7B+

in capital raised by the i-lab ventures since 2011

4K+

ventures launched since 2011

200+

Harvard alumni ventures supported in the past decade



Pagliuca Harvard Life Lab

Catalyzing Innovations in Life Sciences

The Pagliuca Harvard Life Lab, a state-of-the-art wet laboratory, provides essential infrastructure to high-potential biotech and life sciences ventures at Harvard, facilitating their transition into the commercial sector. The Life Lab provides a variety of resources, cutting-edge scientific equipment, and a multidisciplinary and collaborative space that enables venture teams to evolve into successful startups. Over the past year, the Life Lab has supported 57 companies, 54 of which are based in Massachusetts, underscoring its impactful contributions to the regional ecosystem of innovation.

57

life sciences startups were launched over the past year through the Pagliuca Harvard Life Lab, 90% of which are based in Massachusetts.

“To this day, I count on Life Lab relationships for mentoring, connections, and advice on moving Vaxess forward. It has been amazing to watch my peers grow – from taking companies public, to launching products, to transitioning into the investor world – and I’ve been lucky to learn from all of their experiences.”

MICHAEL SCHRADER
CO-FOUNDER AND CEO, VAXESS TECHNOLOGIES INC.

HARVARD GRID

Launched in September 2022, the Harvard Grid aims to accelerate the development of promising technologies that address critical challenges such as climate change, sustainability, alternative energy, and a range of other global issues.

Blavatnik Biomedical Accelerator

Advancing innovations to improve healthcare and medicine

\$28M

in grants awarded to 158 projects in the past 16 years

\$154M

in follow-on revenue and research funding generated to support continued innovation at Harvard and contributing to the launch of new Massachusetts-based companies

The Grid Accelerator

Advancing innovation in robotics, quantum computing, energy storage, and more

\$3.4M

in grants awarded to 37 projects in the past 10 years

\$175M

in financing raised by 16 Harvard-launched startups

At the Heart of Massachusetts’ Innovation Economy

Harvard’s research enterprise, its affiliated teaching hospitals, and its sister institutions create a powerhouse for attracting funding, driving innovations, generating knowledge, and fueling Massachusetts’ economy.

Examples of Massachusetts-Based Companies Launched Around Harvard Technologies

Beam Therapeutics	General Biologics	Tender Food
Bifrost Biosystems	Hyperlight Corp	Unravel Biosciences
Bluetech.io	i2O Therapeutics	Verve Motion
Circe Bioscience	Kula Bio	Verve Therapeutics
CytoTronics	Metalenx	Vesigen Therapeutics
Editas Medicine	PasCal Technologies	Vizgen
Elevian	RightHand Robotics	WurQ
Evantigen	Soft Robotics	

\$5B+

in equity financing raised by startups launched to commercialize Harvard technologies in the past 5 years

2023 Biotechnology Venture Capital Funding

\$9.2B

in venture capital (VC) funding was received by 78 biotechnology companies in Massachusetts

\$8.5B

of this VC funding was received by 62 companies with connections to Harvard (92% of the funding awarded)

A Harvard alum or faculty member serves on the board or on the management team of 22 of the 25 largest life sciences companies in Massachusetts. Seven of these companies are founded or co-founded by Harvard affiliates.



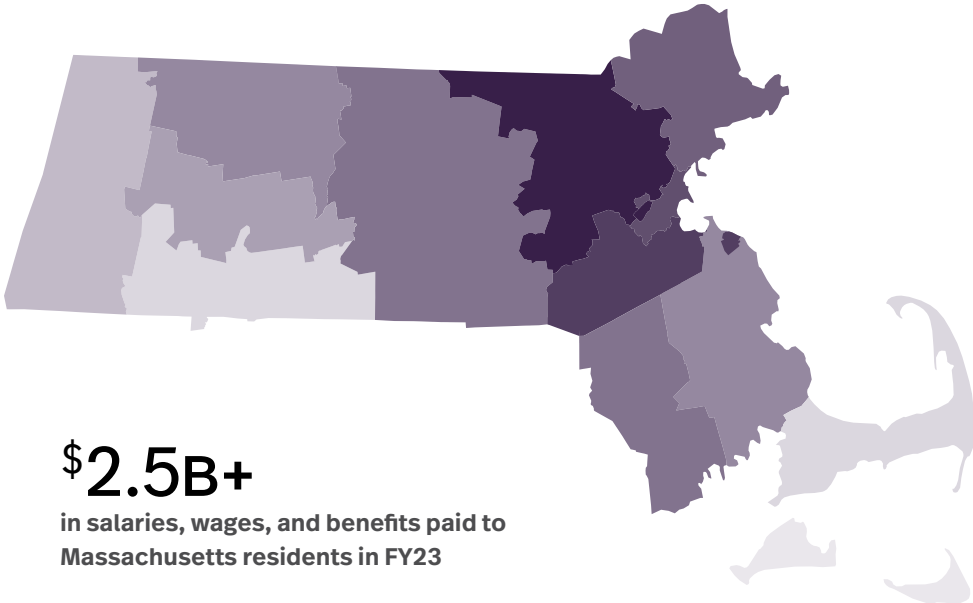
Employment & Workforce Development

Anchoring a knowledge-based economy as one of the state’s largest employers. Accelerating workforce development at Harvard and beyond through market-driven programs and initiatives.

HARVARD EMPLOYEES

<h1>18,718</h1> <p>Massachusetts residents are directly employed by Harvard</p>		<p>4th-largest employer of Massachusetts residents</p>	<p>#1 largest employer in the city of Cambridge for 24 consecutive years</p>
ACADEMIC		NONACADEMIC	
<h2>4,914</h2>		<h2>13,804</h2> <p>includes research and faculty assistants, lab technicians, staff members, and administrators</p>	
<h3>3,097</h3> <p>faculty</p>	<h3>1,817</h3> <p>postdocs</p>		

Harvard employees:
Where are they from?



MA Counties*

Barnstable	76
Berkshire/Dukes/Hampden/Nantucket	38
Bristol	196
Essex	889
Franklin	21
Hampshire	32
Middlesex	10,573
Norfolk	2,247
Plymouth	425
Suffolk	3,826
Worcester	395

Outside of MA 1,821

* AS OF SEPTEMBER 2023

\$2.5B+
in salaries, wages, and benefits paid to Massachusetts residents in FY23

PROFESSIONAL DEVELOPMENT & CAREER ADVANCEMENT

Harvard offers several programs and initiatives aimed at fostering career advancement and leadership development for its employees. These programs include the **Center for Workplace Development (CWD)**, which provides varied tools and coaching for career success; the **Tuition Assistance Program (TAP)** that allows employees to earn degrees from Harvard for a fraction of the cost; and the **Administrative Fellowship Program**, which focuses on enhancing leadership opportunities for talented, mid-career professionals, especially those from historically underrepresented groups.

232
CWD courses on leadership, management, and professional development offered in FY23

2,523
employees participated in CWD courses in FY23

400+
employees have participated in the Administrative Fellowship Program to date

1,385
employees took Harvard Extension School courses using TAP during the 2022–2023 academic year

WORKFORCE DEVELOPMENT

Resources, Internships, and Apprenticeships

Harvard offers innovative and market-driven programs thoughtfully designed to position individuals for success. From high school students to working professionals, anyone at any stage in their career and across industries can participate in skills-based workshops and events that support their professional development and career goals. Key among these offerings are programs and resources provided by the Harvard Ed Portal, alongside internships and apprenticeships for youth that expand access to valuable learning and work experiences.

628
participants in the Harvard Ed Portal’s Workforce Development Program in FY23

10
individuals have been hired at Harvard through Apprenti, a technology-focused apprenticeship

43
Boston and Cambridge high school students were placed in summer jobs across more than 35 Harvard departments through the Summer Youth Employment Program during summer 2023

290+
Year Up interns have been hired since Harvard first partnered with the organization more than 15 years ago

“As a high school student, many experiences prepare you for careers and collaborative workplaces, but Harvard’s Summer Youth Employment Program [SYEP] provided the unique opportunity to build skills through immersion in an office environment (in my case, the Office of Undergraduate Research and Fellowships). I felt well-supported by my mentors in the program, and I built invaluable skills both as an employee and [as] a student. I truly enjoyed participating in SYEP and the tremendous personal and professional growth it allowed.”

IRENE HILL
SUMMER YOUTH EMPLOYMENT PROGRAM (SYEP) PARTICIPANT
CAMBRIDGE, MA

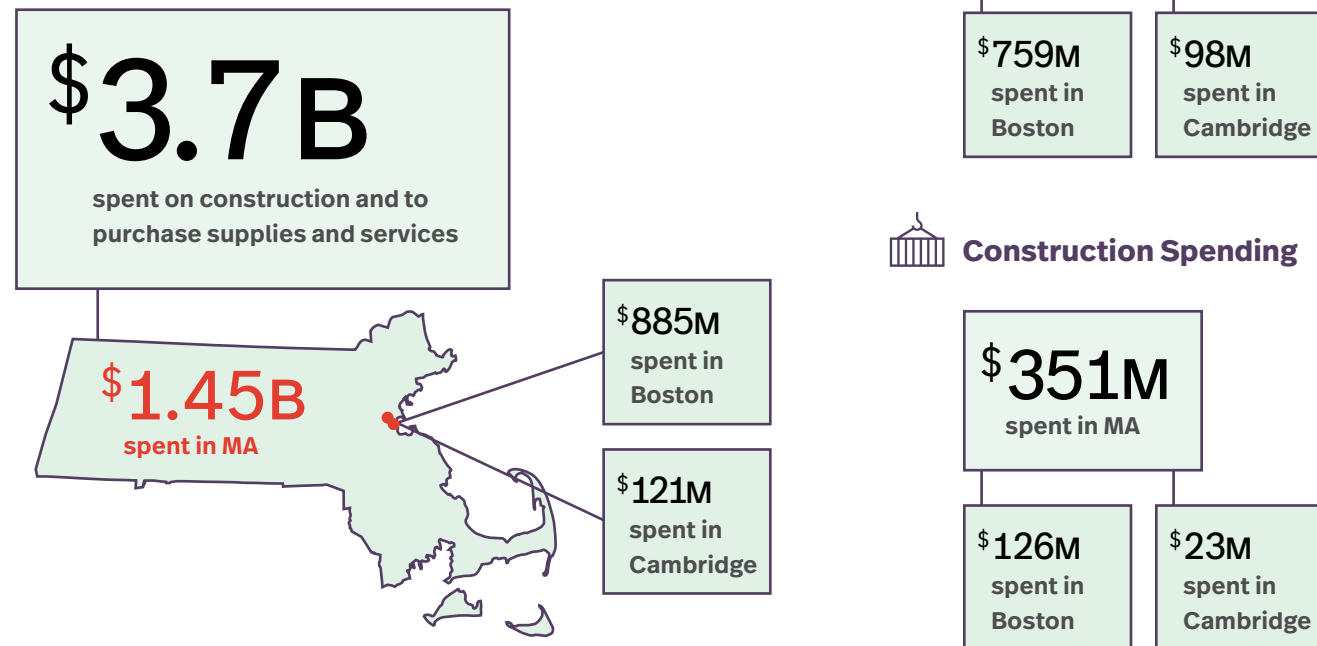


Impact

Supporting local businesses through purchasing and tourism. Collaborating with state and local partners to help solve some of the region's most pressing challenges.

IMPACT OF LOCAL SPENDING

In FY23, Harvard spending totaled **\$6.1 billion**. Harvard personnel expenses totaled **\$2.4 billion**. The majority of the spending went to purchase supplies, maintain the physical plant, and run the University.



TOURISM

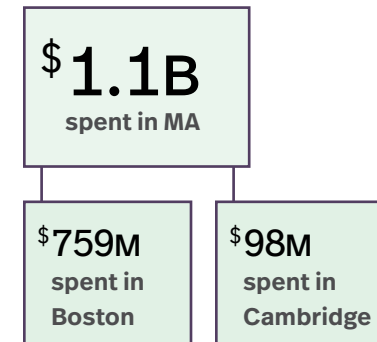
As a cultural anchor and America's oldest university, Harvard remains one of the top tourist destinations in Massachusetts.

650K
visitors to Harvard
Museums each year

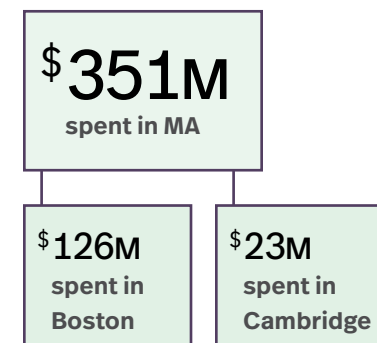
32K+
people come to
Harvard Square to
attend the University's
Commencement each year



Supplies & Services



Construction Spending



Harnessing Harvard's Student and Faculty Expertise to Address Community Needs

Bringing the University's research and teaching mission to life, Harvard faculty and students actively collaborate with state and local government to meet community needs through research and innovative solutions. Harvard Law School's Immigration and Refugee Clinical Program has been engaged in responding to the migrant crisis following Governor Maura Healey's (AB '92) emergency order, aiding families with work authorizations through a joint effort with state and federal agencies, as well as other clinical programs and local community organizations. Students from the Harvard Kennedy School's Greater Boston Applied Field Lab innovatively made the case for a transportation hub in Everett on an underutilized, contaminated site, employing virtual reality to envision land use, helping to guide the development plan.



LEARN MORE

HKS students make the case to create a public transportation hub on reclaimed land in Everett.

Photo by Jessica Scranton

Harvard Kennedy School students used virtual reality headsets to present their research findings and 3D designs for a transportation hub in Everett, including the area's transit and economic development potential.



Sustainability

Working to address climate change through science-based and scalable solutions. Helping the region lead through a sustainable campus.

ACCELERATING ACTION FOR A SUSTAINABLE FUTURE

Harvard is committed to a holistic sustainable development approach in its campus operations. The University’s objective is to address climate, health, and equity in its operations, built environment, and beyond. The Office for Sustainability, which was formed in 2008 to accelerate the adoption of solutions and actions that protect the environment and further climate action, leads Harvard’s sustainability priority setting campus wide. OFS engaged faculty, students, and staff to develop the goals outlined in the University’s second-generation Sustainability Action Plan released in May 2023.

HARVARD’S FOSSIL FUEL GOALS

FOSSIL FUEL–FREE BY 2050

Goal Zero ensures elimination of fossil fuels in the University’s district energy systems and buildings, 100% new renewable electricity procurement, and a 100% electric vehicle fleet. By recognizing the damages caused by fossil fuels, rather than only looking at carbon emissions, Harvard seeks to reduce the negative health impacts of fossil fuel use and production, and the University aims to reduce the use of toxic chemicals that contain fossil fuels, creating a healthier value chain.

FOSSIL FUEL–NEUTRAL BY 2026

As a bridge to reach Goal Zero, Harvard has a short-term objective to be fossil fuel–neutral by 2026. This means Harvard will zero out campus emissions (Scope 1 and Scope 2).

A Sustainable Campus

30%

net reduction in greenhouse gas emissions achieved in 2016

148

LEED-certified projects and 1 Living Building Challenge project

5M SQ FT

Harvard has avoided harmful classes of chemicals (e.g., PFAS and chemical flame retardants) across 5 million square feet of campus through the Harvard Healthier Building Academy

24%

reduction in water usage from 2006 levels

30%

of Harvard’s bus fleet is 100% electric

18K

trees across Harvard’s campus



[+ READ MORE](#) on the Harvard Gazette: [Keeping the plan sustainable](#)

Reducing Supply Chain Emissions

Harvard is prioritizing action on Scope 3 including reduction targets for embodied carbon and food.

Harvard set a goal to reduce embodied carbon in the primary materials used in new construction projects by a minimum of 20% compared with conventional buildings.

Harvard set a goal to reduce campus food-related emissions by 25% (or per-plate emissions by 38%) by 2030.

Climate Solutions Living Lab

Combining teaching and applied research, the Climate Solutions Living Lab enables Harvard graduate students to advance climate change measures and new, replicable, and innovative steps to address climate change. Students work as part of Harvard, other institutions, government, and companies’ goals. The Office for Sustainability also funds creative student projects that use the campus as a living lab to solve challenges and create a more sustainable community.

100+

climate change projects funded by Harvard’s Office for Sustainability to date

220

courses on climate change, energy, and sustainability across Harvard’s campus

The Salata Institute for Climate and Sustainability at Harvard University

The Salata Institute drives collaboration across Harvard’s many areas of expertise, pursuing practical solutions for all aspects of climate change. It also engages with governments, businesses, and communities to collaboratively implement these solutions. Since its launch in 2022, the Institute has awarded over \$8.68M in climate and sustainability research funding, supporting the work of 62 faculty from across Harvard University; launched and expanded seven funding and career development programs for students; and hosted and co-hosted more than 70 events, including the first Harvard Climate Symposium and Harvard Climate Action Week.

Harvard Climate Symposium

In May 2023, the Salata Institute brought together more than 500 leaders from across academia, business, and government in a symposium on fundamental changes needed to return to a better greenhouse gas emissions reduction path. They were joined by more than 1,000 virtual attendees, who heard from global climate leaders.



PROJECT SPOTLIGHT

Driving Toward Seamless Public EV Charging

Widespread electric vehicle (EV) adoption is critical to confronting climate change – but a lack of sufficient public charging infrastructure is holding back many potential EV drivers. A team of researchers from Harvard and the MIT Center for Energy and Environmental Policy Research are working to accelerate progress on public EV charging as a gating requirement to achieving widespread EV adoption.



[+ READ MORE](#) on the Harvard Gazette: [New Salata-led program aims to grow, improve infrastructure for longer trips, those who can’t charge at home](#)



College & Career Pathways Programming

Providing educational programs, resources, and learning opportunities for public school students to navigate and explore career options. Empowering students to plan for their futures in college and beyond.

At a time when it is more important than ever, Harvard offers a series of college and career pathways programs designed to support public school students in their academic and professional journeys. Studies show that when young people participate in programs and activities that help them envision themselves in future college plans and higher earning careers, the more likely they are to enroll in college and participate in the work necessary to achieve their career goals.

Committed to College and Career Programs That Reach Students Across the K-12 Journey

Students and their families have access to programs that bring them to Harvard's campus as early as elementary school. As Cambridge and Boston public school students progress through middle and high school, programs focus on providing pathways for after high school success.



ELEMENTARY PROGRAMS

- Summer Explorations at the Harvard Ed Portal
- Youth Mentoring with Harvard Undergraduates
- Family-friendly Athletic Events
- Harvard Museum of Natural History and Peabody Museum K-12 Programs



MIDDLE SCHOOL PROGRAMS

- Education Day with Harvard Athletics
- Project Teach: Harvard's Official College & Career Awareness Program
- Pi Day and STEM Programming for Middle School Students, including Boston Public Schools and Cambridge Public Schools



HIGH SCHOOL PROGRAMS

- Crimson Summer Academy
- HMS MedScience
- Science Internship Program for Cambridge Rindge and Latin School students
- AP Biology Hinton Scholars Program
- Summer Youth Employment Program
- Cambridge-Harvard Summer Academy
- Career Exploration Day
- College & Career Resource Fair
- Harvard Art Museums' Graduate Student Teacher Program
- High School Lab Pathways
- College Application Day for Brighton High School
- Science Research Mentoring Program
- Emerging Leaders Program
- Health Professions Recruitment & Exposure Program of the Harvard Medical School
- Scholarships for Boston & Cambridge Students to attend Harvard Extension School
- Harvard John A. Paulson School of Engineering and Applied Sciences STEM Programming for K-12
- Design Discovery Youth, Harvard Graduate School of Design
- Equity in Design Mentorship Program, Harvard Graduate School of Design
- Project Success: Opening the Door to Biomedical Careers

PROGRAM HIGHLIGHTS

College & Career Programs

Emerging Leaders

Radcliffe Institute for Advanced Study

The Emerging Leaders Program (ELP) is a youth leadership development program that connects local high school sophomores with Harvard undergraduates in a mentoring relationship. The ELP curriculum focuses on the intersection of identity and leadership, social movements, and community and civic engagement, providing students with exposure to college life while helping them build practical skills to drive positive change.

100+ students participated during the 2022–2023 academic year



“The Crimson Summer Academy has played a transformative role in my life, both intellectually and professionally. With endless support and encouragement, the CSA provided the space for me to thrive and wonder about my future. I am grateful to have been a part of the CSA’s foundational years and honored to have the opportunity to support this inspiring generation of young people in the same ways the CSA supported me.”

JOSEPH WALCOTT LEWIS
ASSOCIATE DIRECTOR, CSA '09, BC, 13,
HARVARD GSE '18



Crimson Summer Academy at Harvard University

The Crimson Summer Academy (CSA) is an educational program that provides traditionally underserved high school students with a stimulating mix of classes, projects, and cultural activities on Harvard’s campus, helping them prepare for success in college and beyond. Over the course of three consecutive summers, students from public schools in Boston, Cambridge, and Somerville receive instruction and benefit from sustained support and close mentoring relationships with Harvard College undergraduates that help expand their vision of what’s possible. In August, the Crimson Summer Academy celebrated its 20th anniversary.

69 students participated during the 2022–2023 academic year

94% of CSA graduates complete college in four years



Massachusetts STEM Week and Harvard’s Science Research Mentoring Program

The Science Research Mentoring Program (SRMP) at the Center for Astrophysics | Harvard & Smithsonian and the Massachusetts Institute of Technology (MIT) provides an opportunity for high school students to work on a yearlong independent research project in astrophysics under the guidance of a Harvard or MIT scientist.

In October 2023, the Center for Astrophysics | Harvard & Smithsonian, hosted its first public lecture since the pandemic – “Astronomy Is for All of Us: Celebrating Women Astrophysicists and the History of Cosmic Discovery” – to align with Mass STEM Week, a statewide effort to raise interest and awareness of careers in science, technology, engineering, and math. The event brought together local students, Cambridge Public Schools leadership, and Lt. Gov. Kim Driscoll, who stressed the importance of connecting students and researchers to drive future innovation. Alyssa Goodman, the Robert Wheeler Willson Professor of Applied Astronomy at Harvard and a Smithsonian research associate, delivered the lecture, highlighting the accessibility of astronomy. The event also featured exhibits, telescope viewing, and hands-on activities.



Lt. Governor Kim Driscoll visited campus in October 2023 as part of Massachusetts STEM Week. Thom Burns, Curator of the Harvard Plate Stacks shows the Lt. Governor examples of the female astronomers of Harvard throughout history.



Leading Locally

Advancing partnerships and collaborations that contribute to the strength and well-being of the cities of Boston and Cambridge. Shaping a vibrant and shared future.

As an anchor institution and one of the largest employers in Massachusetts, Harvard University is proud to contribute to its host communities in Boston and Cambridge. Through programs, partnerships, and direct contributions, Harvard works to expand opportunities that enhance the well-being of the university's neighbors and strengthen local ties.

BOSTON

3,400+

Boston residents directly employed by Harvard in 2023

\$405M

in wages, salaries, and benefits paid to Boston residents in FY23

\$33M

in payments-in-lieu-of-taxes (PILOT) made to the city of Boston in the last 10 years

\$78M

in taxes paid to the city of Boston in the last 10 years

10

city of Boston departments supported through Harvard student fellowship placements in 2023

37

Boston-based nonprofits supported in FY23

\$20M+

in community programming delivered to the city of Boston annually*

*These programs are separate and apart from Harvard's \$70 million in community benefits connected to institutional development in Allston, as well as the new community benefits linked to the Enterprise Research Campus.

[+ READ MORE](#)



[Harvard University's Community Engagement Report in the City of Boston](#)

CAMBRIDGE

4,580

Cambridge residents directly employed by Harvard in 2023

\$462M

in wages, salaries, and benefits paid to Cambridge residents in FY23

\$40M

in payments-in-lieu-of-taxes (PILOT) made to the city of Cambridge in the last 10 years

\$62M

in taxes paid to the city of Cambridge in the last 10 years

7TH

Harvard is the 7th-largest taxpayer in the city of Cambridge

13

Cambridge-based nonprofits supported in FY23

AAA

Harvard's stable presence in Cambridge supports the city's AAA bond rating as cited by the nation's three major credit rating agencies. The rating has enabled Cambridge to finance a variety of projects at favorable rates, resulting in savings to taxpayers.



LEADING LOCALLY

Spotlight on Housing

Harvard is committed to working with its host communities to address the real-time challenge of housing creation and affordability. In addition to housing 99 percent of its undergraduates for four years, Harvard works with partners across Cambridge and Boston on responsive initiatives aimed at creating and preserving thousands of affordable housing units.

On-Campus Housing

99%

of undergraduates live on campus for four years, relieving pressure on the local housing market

50%

of the buildings on Harvard’s Cambridge campus are devoted to housing

37%

of all campus buildings are residential in use

Harvard’s residential campus includes approximately **15,000 beds** and over **8,700 units** in a range of building types, from dormitories to fully furnished apartments.



Harvard is advancing plans to construct a new home for the American Repertory Theatre at 175 N. Harvard Street in Allston. The project adds more than 500 new beds to Harvard’s housing portfolio.

Harvard’s Housing Partnerships in Allston

	# of Units	# of Affordable Units	Homeownership	Affordable	Senior Housing	No Cost Land
90 Antwerp Street	20	12*	✓	✓		✓
All Bright Homeownership Program	25	0	✓			
65 Seattle Street	42	42*2	✓	✓		✓
Enterprise Research Campus	345	86*		✓		
Addiction Treatment Center of New England	11	11**		✓		
Hill Memorial Baptist Church	50	50³		✓	✓	
Other Harvard-Enabled Developments	857	123		✓		
Total	1,350	324				

HARVARD LOCAL Housing Collaborative

Since 2000, Harvard has committed \$20 million to its revolving loan program known as the Harvard Local Housing Collaborative, an initiative aimed at increasing the amount of affordable housing across Boston and Cambridge. By partnering with three local nonprofit community-development lenders, Harvard seeks to create and preserve affordable housing, build and revitalize healthy communities, and create economic opportunities for low- and middle-income residents throughout the region.

Partners



LISC has partnered with Harvard for nearly 25 years to support housing creation across Greater Boston. Through the Harvard Local Housing Collaborative’s low-cost, flexible funding, Harvard helps to catalyze early stage investment that ultimately enables the development of more affordable housing units at a time when it is needed most.

GUSTAVO QUIROGA
EXECUTIVE DIRECTOR, LISC BOSTON

How the Fund Works



*The Harvard Local Housing Collaborative’s \$20 million fund has revolved more than twice since it was established in 2000 and recommitted in 2019.

FOR MORE INFORMATION on Harvard’s regional housing partnerships, visit community.harvard.edu/housing.



HARVARD
UNIVERSITY

Public Affairs & Communications
114 Mount Auburn Street, 6th Floor
Cambridge, MA 02138
617-495-4955



LEARN MORE

**about Harvard's community
and regional engagement:**

**COMMUNITY.HARVARD.EDU
EDPORTAL.HARVARD.EDU
LEADLOCALLY.COMMUNITY.HARVARD.EDU**