

ANNUAL REPORT

Harvard University's Community Benefits in Allston-Brighton



Harvard remains deeply committed to its longtime partnerships with the Allston-Brighton neighborhood and the City of Boston.

Many of the ways in which the University, community, and City collaborate are included as commitments in Harvard's five active cooperation agreements with the City of Boston:

Science Complex Cooperation Agreement (4/2/08)	IMP Cooperation Agreement (7/10/14)	Harvard ArtLab Cooperation Agreement (4/24/18)
28 Travis Street Cooperation Agreement (1/2/14)	Harvard Life Lab Cooperation Agreement (4/8/16)	

In addition to providing a comprehensive update on Harvard's commitments to the Allston-Brighton community, this annual report highlights many of the exciting partnerships and programs taking place throughout our shared neighborhood, each and every day.

Interconnected, a mural painted by Boston-based artist Sophy Tuttle, transformed the facade of the old New England Deposit Library at 135 Western Avenue. The mural is part of Harvard's Public Art Tours: Allston.

ANNUAL REPORT

Harvard University's Community Benefits in Allston-Brighton

What's Inside

Finding Community at the Harvard Ed Portal 3

Joy and Connection through Public Art

Supporting Small Business Resilience

Expanding Educational Opportunities –
Scholarships for Allston-Brighton Residents

Embracing Allston-Brighton's Spanish-
Speaking Community

On-Location Programs Bring Hands-On
Learning to Brighton High Teens

Housing 10

Public Realm 11

Harvard Allston Partnership Fund 12

Expanded Community Engagement and the Enterprise Research Campus 13

Partnerships 14

Additional Resources and Programs for Allston-Brighton Residents 15

Appendices 16

Appendix A:
Budget Overview: Active Cooperation Agreements

Appendix B:
Status Update: Active Cooperation Agreements

Appendix C:
Housing Stabilization Fund Update

Appendix D:
Harvard Ed Portal Community Programming
Catalog (July 2021 – June 2022)

*Finding Community
at the*

Harvard Ed Portal

Harvard is proud of its longstanding programs and collaborations with the Allston-Brighton neighborhood, so many of which come alive at the Harvard Ed Portal. A dynamic place that nurtures creativity, discovery, and community, the Ed Portal is strengthened by the individuals who come through its doors or engage in its programs. Through these interactions and more, together we are able to build upon a shared vision of community, opportunity, and lifelong learning.

Lawrence S. Bacow
President of Harvard University

Programs at a Glance



Arts & Culture

Supporting a vibrant Allston-Brighton through visual and performing arts, engaging creative arts opportunities for youth, and capacity building



Workforce & Economic Development

Supporting and providing career advancement programs and scholarships to Allston-Brighton residents; Connecting local businesses with programs designed to promote success in a 21st-century economy



Health & Wellness

Providing Allston-Brighton residents with a variety of programs and recreational opportunities designed to promote a healthy body and mind



Digital Literacy & Learning

Fostering lifelong learning in a digital age through innovative, facilitated programs for community members



Youth Programming

Advancing Harvard's commitment to education through programming designed to support classroom learning and develop enthusiastic learners



Public School Partnerships

Bringing Harvard programs and resources to educators, parents, and students within Boston Public Schools in Allston-Brighton

By the Numbers

July 2021 - June 2022

682

total Harvard Ed
Portal members
this year

253

events hosted
by the Ed Portal

210k

engagements
across arts
& culture
programming

170

Allston-Brighton
student participants
reached through
youth programming

224

participants
across health &
wellness program

980

participants reached
through workforce
development
programming



Languages spoken by
Harvard Ed Portal staff:

Spanish | Portuguese | English
Mandarin | Cantonese



Muralist Andromeda Lisle (left) and her mother (right) in front her mural Moshup.

The mural reflects a Wampanoag folklore hero and highlights the importance of preserving the cultural significance of animals in the Americas as well as the Indigenous stories that surround them.

A Year in Review Harvard Ed Portal Snapshots



Visitors to the Postcards from Allston exhibition at the Ed Portal.

Visitors pose in front of *Postcards from Allston*, an exhibition created by photographer Edward Boches celebrating the color, character, and creativity of Allston, while documenting changes across the neighborhood.



Harvard Ed Portal mentors and mentees create art masterpieces.

This year, the Mentoring Program included 37 mentors from Harvard College and 54 mentees from Boston Public Schools.



Brighton High School students in the Lab Skills Program at the Harvard Ed Portal.

The program is designed to provide students with an opportunity to learn about STEM careers and workplaces through a part-time, six-week paid summer apprenticeship. This year, six students participated.



In April 2022, Gardner Pilot Academy students visited the Harvard Recycling Center and cleaned up debris along the banks of the Charles River as part of Harvard Ed Portal's Environmental Ambassador's Club.

Joy and Connection through Public Art

This past winter, evening passersby on Western Avenue in Allston were greeted by a blast of colors, images, and sounds shining through the windows of the Harvard Ed Portal. The art installation, called FREQUENCIES, was a 20 minutes-long video loop of remixed crowdsourced sounds and visuals celebrating Allston-Brighton and the everyday moments that spark joy, familiarity, and togetherness.

FREQUENCIES, which was commissioned by the Harvard Ed Portal, with additional funding from a Transformative Public Art grant from the City of Boston Mayor's Office of Arts and Culture, was the result of a collaboration between two local artists: musician and composer Maria Finkelmeier, and digital glitch artist Allison Tanenhaus, a Harvard alum. After meeting at an Ed Portal artists' workshop led by Finkelmeier, the two became fans of each other's craft and eventually started collaborating.

With help from the Ed Portal, the artists used social media, word-of-mouth, and two in-person events to explain their project and solicit footage from the community. They received dozens of submissions from individuals and organizations including Campus Childcare and Providence House Assisted Living. Some of the most remarkable footage was from students enrolled in a visual arts class at Brighton High School. "They really showed us the world through their eyes. We got a slice of their life, and their unique perspective," noted Tanenhaus.

The diversity and age range of the submitters meant that the artists had a depth of source

material, and the end result was a reflection of the community itself. Both artists use digital tools to manipulate and distort the raw material; often layering sounds and images to a point that it is not immediately recognizable, but they purposely developed FREQUENCIES to maintain a level of recognizability.

"I did have the public in mind especially the contributors— where I wanted them to be able to say 'Oh that's my piece. I am in this. I'm represented,' noted Tanenhaus. "What we're so excited by is the comfort that the community had with letting us into their spaces," added Finkelmeier.

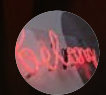
"The process to develop FREQUENCIES was community-driven from the start, and that came through in the end-result. It was approachable and full of fun surprises. It really embodied what public art is all about," noted Ed Portal Arts Coordinator Philana Brown.

FREQUENCIES was held from November 2021 until the end of February 2022 at the Harvard Ed Portal's Crossings Gallery, an exhibition space that features the work of local artists.



FREQUENCIES, a video mural celebrating Allston-Brighton

Harvard Ed Portal's Crossings Gallery Additional Exhibitions 2021 – 2022



Monuments Reimagined



Running in the Rain



Harvard Staff Art Show



Postcards from Allston

By the Numbers

58

arts programs for people of all ages, including gallery exhibitions, performing arts events, and youth programs

30

Allston-Brighton-based artists reached through Ed Portal programs

Supporting Small Business Resilience

More than two years into the COVID-19 pandemic, small businesses continue to face a host of challenges.

“The initial shutdown, the surges that have followed, and general uncertainty across the economic landscape have created new challenges and exacerbated many of the difficulties small businesses were experiencing before COVID-19,” said Gordon Szerlip, Chief Connector of e-VOLV Senior Connections, a Brighton-based business dedicated to helping senior citizens connect through technology.

To help small businesses that populate the neighborhood, the Harvard Ed Portal provides support and training for local small business owners. This past year, the Ed Portal offered fourteen workshops, including programs focused on helping small businesses position themselves for success in a post-pandemic world.

Designed to help business owners manage high-stakes interruptions, a workshop titled, “*Rebuild Cash Flow Post-Pandemic for Small Businesses*” offered tools for developing a cashflow system and practical solutions for business owners navigating unforeseen interruptions to their work. “*Thrive vs. Survive: Financial Projections for Small Business Owners*” offered lessons focused on leveraging historical financial information to make data-based decisions and predictions. Small business owners had the opportunity to learn how to utilize key metrics, analyze trends, and understand the relationship between decisions and expected outcomes. By the end of the workshop, participants drafted assumptions to predict future profits and financing needs.

In addition to promoting small business resilience, the Harvard Ed Portal offers programs designed to help small business owners make strategic decisions and plan for success. This includes the recently launched Harvard ManageMentor, a program that combines flexible online learning and virtual workshops taught by Areen Shahbari, a faculty member at the Harvard Extension School. ManageMentor provides interactive activities, expert commentary, articles from Harvard Business Review, and additional access to expert knowledge. Upon completion of ManageMentor, the program provides small business owners with one-on-one business coaching and a four-month scholarship to LinkedIn Learning to further support their success.

“ManageMentor and one-on-one coaching support small businesses while building a strong community of small business owners who share resources and best practices,” said Areen Shahbari. “These programs and others at the Ed Portal allow us to problem-solve together and positively impact small businesses – the heart of our communities.”

“Through the Harvard Ed Portal, I’ve had the opportunity to engage in mentoring programs that offer resources to address critical issues,” said Szerlip. “There is always something new to learn.”

From developing a business plan to navigating the post-pandemic world, during the past year, the Ed Portal offered a collection of expertly tailored classes for small businesses, including: *

- Harvard ManageMentor: Business Plan Development for Small Businesses
- Harvard ManageMentor: Strategic Thinking for Small Businesses
- Harvard ManageMentor: Marketing Essentials
- Harvard ManageMentor: Innovation and Creativity
- Small Business Saturday is Coming—Is Your Business Ready?
- Rebuild Cash Flow Post-Pandemic for Small Businesses
- The Relationship Between Cash and Operations for Small Businesses
- Increase Approvals of Financing Capital for Small Businesses
- Dashboards and Financial Analysis for Small Businesses
- Connecting the Dots: Financial Ratios for Small Business Owners
- Thrive vs. Survive: Financial Projections for Small Business Owners
- Budget vs. Forecast for Small Business Owners
- Financial Agility: Scenario Planning for Small Business Owners
- Product and Service Pricing for Small Businesses

*See Appendix D for a complete list of classes

By the Numbers

14
economic development
classes offered to local
business owners

224
participants across economic
development workshops

1,288
subscribers to the Harvard
Ed Portal’s Economic
Development Newsletter
as of June 30, 2022

Sign Up

**for the Economic
Development
Newsletter**

hrvd.me/econdev-newsletter



Expanding Educational Opportunities

Scholarships for Allston-Brighton Residents

Each year, the Harvard Ed Portal offers scholarships to Allston-Brighton residents to take courses at the Harvard Extension School. With more than 900 courses across a variety of academic disciplines, the Extension School provides learners with the opportunity to advance in their careers, explore an academic passion, or pursue a degree, expanding access to educational opportunities through a combination of online and on-campus programs.

To date, the Ed Portal has awarded more than 250 scholarships to residents from Allston-Brighton. From humanities to medicine and public health, screenwriting and video editing, sciences and engineering – these scholarships have allowed residents to pursue a wide range of study interests.

“I took Professor Allyson Sherlock’s Video Editing and Digital Design class,” said Anne Coughlin who lives in Brighton. “I am deeply grateful to the Harvard Ed Portal for the scholarship. It gave me the opportunity to work on a project where I created a short film about the history of my family. The course was life-changing, and I learned so much.”

With workforce development as a core area of focus for the Ed Portal team, the Extension School scholarship model was revised for the fall semester of 2022 to further support

career development and skill building among neighborhood residents. Allston-Brighton individuals can now use the scholarship toward an undergraduate or graduate certificate program. If they continue to meet the scholarship criteria, individuals enrolled in certificate or degree programs can receive a scholarship for one course per semester until their certificate is earned.

Beyond the Extension School, the Ed Portal provides additional scholarships for Allston-Brighton residents to access Harvard programming. These include access to a four-week course at the Harvard Ceramics program; a Kids Theater Scholarship at the American Repertory Theater (A.R.T.), that allows students aged 5-13 who live or go to school in Allston-Brighton to participate in A.R.T. programming; as well as scholarships for youth to access various athletics programs at Harvard.

Community Scholarships to the Harvard Extension School for Allston-Brighton Residents

In the 2021–2022 academic year, scholarship recipients enrolled in the following courses:

Fall 2021

- Beginning Screenwriting
- Child Health in America and Around the World
- Elementary Modern Standard Arabic I
- Health Justice
- Introduction to Sustainability and Environmental Management
- Molecular and Cellular Biology
- Political Corruption
- Project Management
- The Art of the Book Review
- Understanding Special Needs

Spring 2022

- Advanced Screenwriting
- Introduction to Quantitative Methods
- Music and the Mind
- Stem Cell and Regenerative Biology
- Stress, Coping, and Resilience
- Video Editing and Digital Design
- Website Development
- Weeping in the Religious Imagination

By the Numbers

20

scholarships to Harvard Extension School offered to Allston-Brighton residents

26

A.R.T. scholarships offered to Allston-Brighton students

12

Ceramics and Artisans Asylum scholarships offered to Allston-Brighton residents



Embracing Allston-Brighton's Spanish-Speaking Community

The Allston-Brighton community is one of the most ethnically and culturally diverse in Boston. In order to further its mission as a neighborhood resource open to all, the Harvard Ed Portal continually seeks ways to better meet the needs of and reduce barriers to access for all community members.

Embracing cultural and ethnic traditions and vibrant public spaces across Allston-Brighton, the Harvard Ed Portal continues to advance programming for non-native English speakers. Two years ago, the Ed Portal established an English Language Learners subcommittee to assess the needs of the Spanish and other language-speaking community. Through the work of the subcommittee, the Ed Portal has increased accessibility to programs with a number of efforts: the Ed Portal website automatically translates program offerings into Spanish and other languages including Mandarin, Korean, and Portuguese; program applications are offered in multiple languages; and programs are designed intentionally to remove barriers to access (both language-based and cultural) and more closely engage the Allston-Brighton community.

With Spanish identified as the second most commonly spoken language in the neighborhood after English, this past year, the Ed Portal worked on programs designed to encourage participation. “Families and Children: Team Up and Learn Together”, workshop that equips parents with practical tools to promote self-care and personal wellness was offered in

Spanish through a collaboration with the Baldwin Early Learning Academy. “The course was fun and enlightening,” said Neidmar Ferreira who lives in Allston. “We learned about the importance of exercising, perseverance, and how to overcome our daily challenges among many other things.”

Other programs were designed intentionally to help break down barriers to communication. An “Introduction to Zoom” workshop, offered in Spanish, provided an overview of the popular online meeting system. Participants were supported with instructions for creating free Zoom accounts and logging into meetings on their computer or smartphone.

Programs like these help cultivate community and further engage more neighbors across Allston-Brighton.

By the Numbers

27
Allston-Brighton residents attended family engagement events

33%
of Ed Portal staff speak Spanish or a language other than English



The Harvard Ed Portal website is translated into multiple languages, including Spanish

On-Location Programs Bring Hands-On Learning to Brighton High Teens

The Ed Portal has long served as a coordination hub for many of Harvard's partnerships with public schools in both Cambridge and Boston. Many of the Ed Portal's school-age programs have given students the opportunity to work with Harvard undergraduate and graduate students as mentors and instructors both at the Ed Portal itself and through opportunities where mentors visit students in their classroom.

Last year, programming that brought mentors into classrooms took on a new level of importance as many Harvard buildings, including the Ed Portal were limiting public access due to the ongoing pandemic. "We really had to figure out ways to push into schools in order to reach our students," explained Jean Dao, Manager, High School Programming & Professional Development at the Ed Portal. According to Dao, that challenge also presented an opportunity to reach what had been historically a challenging group to reach: high school students.

The Public Schools Partnerships team, including Dao, met with teachers and administrators at Brighton High School (BHS) to find ways for the Ed Portal to bring programs or staff into the school that could support teachers. "I really see our role as that of a connector," explained Dao. "We can connect teachers with expertise and resources to support the curriculum or enrichment goals they have for their students."

One such connection brought the expertise of an instructor from Harvard's Ceramics Program to art teacher Shari Malgieri's students at BHS. The multi-week program taught students about both the history of clay and how to create art with the medium.

"It's great for the kids to have the opportunity to learn from and develop a dialogue with specialists in a profession—especially when they are so passionate about their art form and they have facilities; in this case kilns, clay and glazes, that are not usually available to us. It really gave the kids a hands-on awareness about the steps it takes to create and finish something in clay. It's an experience students wouldn't get from a book," explained Malgieri.

By the Numbers

446

hours of teaching support provided to Allston-Brighton youth by four Harvard Graduate School of Education students

276

student participants in college preparation, career pathways, tutoring, and personal development programming

6

Brighton High School students participated in the Lab Skills Program



Sign Up

**for the Public
School Partnerships
Newsletter**

hrvd.me/psp-newsletter



Housing

Harvard is committed to supporting a range of affordable housing initiatives throughout Allston-Brighton in coordination with the City of Boston and nonprofit partners.

These include the All Bright Homeownership Program – a first-of-its-kind pilot partnership between Harvard, the Allston Brighton Community Development Corporation (ABCDC), and the City of Boston – that promotes a permanent increase in the overall owner-occupancy rate through the use of deed restrictions, allowing residents to stay in the neighborhood; the Harvard Local Housing Collaborative (HLHC) – a partnership between Harvard and three local community lending organizations aimed at increasing the amount of affordable housing in Greater Boston; and contributions to the City of Boston’s Housing Linkage Program that was designed to further leverage funding for affordable housing.

By the Numbers

24

units sold since start of All Bright Homeownership Program

5,500+

units of affordable housing created or preserved through HLHC in the City of Boston over the past 20 years

\$5.9M

in housing linkage payments to the City of Boston

65-79 Seattle Street

This past year, Harvard University announced the donation of a nearly one-acre parcel at 65-79 Seattle Street in Allston for an affordable homeownership development. The project is at its earliest stage but once completed, it will provide homeownership opportunities for neighborhood residents in the heart of lower Allston, adjacent to connected green space, Harvard campus buildings, and the Enterprise Research Campus.

90 Antwerp Street

The donation of 65-79 Seattle Street builds on the success of another partnership with the City of Boston and community to construct an affordable homeownership development at the former Brookline Machine site. In 2014, the University donated the 30,000 square foot parcel at no cost to the City of Boston, enabling a city-run development process. The project is now complete and includes 20 deed-restricted homeownership units, 12 of which are affordable units. The development includes 20 covered parking spaces for homeowners and family-oriented design features like bicycle storage and publicly accessible open space. Harvard’s contribution helped to leverage further funding sources that have boosted affordability: a \$1 million award from Community Preservation Act Funding and \$750,000 from Boston’s Neighborhood Housing Trust.

30,000

square foot parcel donated by Harvard University

20

deed-restricted homeownership units

12

affordable homeownership units



Photo of the completed 90 Antwerp Street development in Allston

Public Realm

Harvard supports public space improvements that allow Allston-Brighton to shine. From direct financial support to opening campus spaces to the Allston-Brighton community, the University's initiatives help empower the efforts of community partners to enhance the physical and cultural landscapes of the neighborhood and contribute to vibrant civic and cultural activities.

Transforming Collins Park

Recently, work was completed at Collins Park, a project supported by the Harvard-Allston Public Realm Flexible Fund, designed to advance projects that create vibrant public spaces and encourage civic and cultural activity. In partnership with Friends of Collins Park, funding supported the restoration of the park, transforming it into a place that is welcoming to residents. Collins Park is dedicated in honor of United States Army Staff Sergeant James Finbar Collins, who gave his life in World War II.



Road to the Right Track, an Allston-Brighton track team of youngsters aged 10 to 18, is dedicated to promoting the physical and mental wellbeing as well as the good decision-making for youth in the City of Boston. In support of the team's activities, Harvard has partnered with the program to provide access to the University's athletic and physical fitness facilities. In this photo, the Road to the Right Track team is practicing at Harvard's McCurdy Outdoor Track.





Harvard Allston Partnership Fund

Created by Harvard University and the City of Boston, in collaboration with the Allston community, the Harvard Allston Partnership Fund (HAPF) supports local nonprofit organizations by leveraging their expertise in delivering a wide range of programs from neighborhood improvement projects to educational and enrichment activities for families and local youth. Since the fund was established in 2008, Harvard has partnered with 42 local nonprofits and distributed over \$1.4 million in grants.

2021–2022

14
nonprofit
awardees

\$100k
in grants

Since 2008

\$1.4M
in grants

42
nonprofit
partners

161
grants



From left to right: Lawrence Bacow, President of Harvard University; Liz Breadon, Boston City Councilor; Mariela DeLeon, Director of Out of School Time at the Gardner Pilot Academy; and Barry Reaves, Director of Diversity, Equity, and Inclusion at Boston Planning and Development Agency celebrate at the 14th Annual Harvard Allston Partnership Fund ceremony held in May, 2022. For the first time since the beginning of the pandemic, the ceremony took place in person at Harvard's newly opened Science and Engineering Complex and brought together members of the community and award recipients from the past three years.

"My neighborhood was and still is made up of black and brown families, immigrant families, and first generation families that work multiple jobs, hoping to give their young ones a better life. I'm now privileged to serve those very same families at the Gardner Pilot Academy. As we strive to deliver programs – from adult education, to arts, to direct assistance for families in need – we are grateful for the Partnership Fund grants that have enabled this work and brought us one step closer to building a strong community at the GPA."

– **Mariela DeLeon**
Director of Out of School Time
Gardner Pilot Academy

2021–2022 HAPF Grant Recipients

Allston-Brighton Food Pantry

Awarded grant to allow for the permanent continuation of the Allston Brighton Community Fridge.

Allston-Brighton Youth Hockey Association

Awarded grant to support local youth hockey and Learn to Skate programs.

Big Sister Association of Greater Boston

Awarded grant to support mentoring programs for girls.

Boston String Academy

Awarded grant to support musical instruction for elementary school students.

Brazilian Women's Group

Awarded grant to support the workforce leadership development program and COVID-19 prevention and education program.

Family Nurturing Center

Awarded grant to support playgroups serving families in North Allston, North Brighton.

The Fishing Academy

Awarded grant to support fishing instruction for local youth.

Gardner Pilot Academy

Awarded grant to support a licensed school-based clinician.

Kithara Project

Awarded grant to support guitar instruction for local youth.

Oak Square YMCA

Awarded grant to support the engagement of local families in YMCA's newly established Out of School Time Center at the Charlesview's Fiorentino Community Center.

Open Door Soup Kitchen

Awarded grant to support the Prepared Meals and Grocery Bags programs.

West End House

Awarded grant to support the Family Food Program.

West End House Boys Summer Camp

Awarded grant to support camp scholarships for local youth in North Allston, North Brighton.

West End House Girls Camp

Awarded grant to support overnight camp in the summer for North Allston, North Brighton girls.

Expanded Community Engagement

and the Enterprise Research Campus

This July, the Boston Planning and Development Agency (BPDA) board unanimously approved the first phase of Harvard University's Enterprise Research Campus (ERC) in Allston. The project consists of 900,000 square feet of mixed-use development that includes residential areas, office and lab space, a hotel, a conference center, restaurant and retail locations, and publicly accessible open and green spaces that will contribute to an already vibrant neighborhood.

The approval emerged from extensive engagement with the Allston community, the City of Boston, and multiple stakeholders over many years. A public review process included site walks, surveys, focus groups, more than 12 pop-up events, and more than 10 public meetings.

Some of the community benefits tied to the ERC include:

Quality affordable housing

25 percent of all residential housing units in Phase A developed by Tishman Speyer will be affordable, nearly double the 13 percent of on-site units required under the City of Boston's 2015 Inclusionary Development Plan. Additionally, **20 percent** of all units in future ERC development will be affordable, ensuring that the neighborhood remains diverse, inclusive, and vibrant. Over the next 12 years, Harvard will dedicate **\$25 million** to further enable affordable housing creation and preservation projects in Allston-Brighton.

Supporting Small Businesses

A quarter of the retail areas will be reserved for local, small, and/or minority-/women-owned businesses. Harvard will also provide **\$1.05 million** over three years toward new and existing workforce education programs, including robust workforce development programs through the Harvard Ed Portal.

Creating Shared Outdoor Gathering Spaces

20 percent of the total developable land area in the fully built ERC will be dedicated as publicly accessible open space. ERC will also become home to more than **800 newly planted trees**, covering nearly a third of the land by tree canopy.



Partners

Harvard is pleased to recognize our partners from the Boston community and across campus that contribute to many programs and partnerships, making our relationship with the Allston-Brighton neighborhood so meaningful.

July 2021 – June 2022

External Partners

Community:

Allston Board of Trade

Allston Brighton Adult Education Coalition

Allston Brighton Community Development Corporation

Allston Brighton Health Collaborative

Allston-Brighton Food Pantry

Allston-Brighton Youth Hockey Association

Allston Civic Association

Allston Village Main Streets

Big Sister Association of Greater Boston

Boston String Academy

Brazilian Women’s Group

Brighton Board of Trade

Brighton Main Streets

Charlesview, Inc.

Family Nurturing Center

Gardner Adult Education Program

Kithara Project

McNamara House

Oak Square YMCA

Open Door Soup Kitchen

SCORE Boston

The Fishing Academy

West End House

West End House Boys Summer Camp

West End House Girls Camp

YMCA of Greater Boston

Young Audiences of Massachusetts

Zone3

City of Boston:

Boston Parks and Recreation Department

Boston Planning and Development Agency

Boston Police Department

Boston Public Library System

- Honan-Allston Library

Boston Public Schools

- Boston Green Academy

- Brighton High School

- Edison K–8 School

- Gardner Pilot Academy

- Horace Mann School for the Deaf and Hard of Hearing

- Jackson Mann K–8 School

- Mary Lyon School

- Baldwin Early Learning Pilot Academy

Department of Neighborhood Development

Mayor’s Office of Arts and Culture

- Boston Cultural Council

Mayor’s Office of Neighborhood Services

Mayor’s Office of Workforce Development

Harvard Partners

American Repertory Theater

Derek Bok Center for Teaching and Learning

Harvard ArtLab

Harvard Athletics

Harvard Business School

- Harvard Business Review

Harvard College Center for Public Service and Engaged Scholarship

Harvard Extension School

Harvard Graduate School of Education

Harvard Human Resources

- Center for Workplace Development

Harvard Kennedy School

Harvard John A. Paulson School of Engineering and Applied Sciences

Harvard Planning and Project Management

Harvard Real Estate

Harvard Strategic Procurement

Harvard University Center for Wellness and Health Promotion

Harvard University Employee Credit Union

Harvard University Faculty of Arts and Sciences

- Department of Molecular and Cellular Biology

- Department of Chemistry and Chemical Biology

- Harvard Art Museums

- Harvard Ceramics Program

- Harvard Museums of Science & Culture

- Harvard Museum of Natural History

- Harvard Peabody Museum of Archaeology & Ethnology

- Harvard-Smithsonian Center for Astrophysics

LabXChange

Harvard University Information Technology

Harvard University Police Department

HarvardX

Advisory Boards & Committees
2021 – 2022

Harvard Allston Task Force

Lea Beaulieu

Troy Brogan

John Cusack

Dan Daly

Rita DiGesse

Anthony D’Isidoro

Mike Hanlon

Bruce Houghton

Ed Kotomori

Cindy Marchando

Tim McHale

Millie McLaughlin

Barbara Parmenter

Christine Varriale

Brent Whelan

Harvard Ed Portal Advisory Board

Marie Ace

Keith Collar

Victoria D’Souza

Ben Franco

Mark Handley

Erica Herman

Thomas Jehn

Susan Johnson

Fatima Masrar Kayi

Lisa McDonough

Lauren Lafferty

Conor Newman

Pia Sorensen

Maile Takahashi

Rita Vidiya

Jenyffer Alvarez Zumaran

**Workforce & Economic Development
Advisory Board**

John Bruno

Alex Gray

Mark Handley

Jane McHale

Conor Newman

Trinh Nguyen

Michele Rocray

Maile Takahashi

**Harvard Allston Public Realm Flexible
Fund Executive Committee**

Leah Beaulieu

Johanna Bernstein

Sabrina Dorsainvil

Mark Handley

Bruce Houghton

Mary LaRossee

Elsa Rojas

**Harvard Allston Partnership Fund
Advisory Board**

Areen Andrew

Jennifer Barrios

John Bruno

Daniel Daly

Julia Eskew

Mark Handley

Margaret Kelley

Wayne MacKenzie

Lisa McDonough

Conor Newman

Karen Smith

Maile Takahashi

Harvard Ed Portal Team

Eve Alpern, Arts & Culture

Philana Brown, Arts & Culture

Tessa Castellani, Communications

Jason Clark, Manager of Ed Portal and Health & Wellness Program

Jean Dao, Public School Partnerships

Leah Dodell, Digital Learning & HarvardX for Allston

Danielle Easton, Workforce & Economic Development

Ben Franco, Ed Portal Assistant Director

Amy Kamosa, Communications & Media Inquiries

Cyntoria Grant, Public School Partnerships

Dan Hassett-Salley, Design

Susan Johnson, Youth Programming & Mentoring

Cláudia O’Brien, Reception

Brigid O’Rourke, Communications & Media Inquiries

Lorena Paulino De La Cruz, Public School Partnerships

Marcel Pons Ventura, Reception

Libna Ramos, Public School Partnerships

Michele Rocray, Workforce Development

Mariah Smith Sharpe, Mentoring and

Youth Programming

Maile Takahashi, Director of Community Programming and Ed Portal

A special thanks to Allison Tanenhaus, Maria Finkelmeier, Areen Shahbari, Gordon Szerlip, Anne Coughlin, Neidmar Ferreira, Shari Malgieri, Jean Dao, and Mariela DeLeon who contributed to this report.

Photos provided by Harvard Public Affairs & Communications, Edward Boches, Mel Taking, Aram Boghosian, and Frank Hughes.


Additional Resources & Community Programs

for Allston-Brighton Residents

Harvard operates many community-serving programs that are separate and apart from the University’s commitments tied to institutional development in Allston. From educational opportunities for Boston Public Schools students and teachers to mentoring and career exploration, youth internships, critical health and legal

services, support for local nonprofits, and maintenance of public parks and pathways, these programs are a natural extension of Harvard’s mission of teaching and research and reach thousands across the City of Boston. **A few examples are highlighted below:**





Learn More

community.harvard.edu/reports

Free Legal Services from the Clinical & Pro Bono Programs at Harvard Law School

The Clinical and Pro Bono Programs – a collection of 49 in-house clinics, externship clinics, and student practice organizations – provide referrals and free legal services to low-income individuals across the Commonwealth, including residents of Allston-Brighton. Harvard Law School faculty and students help individuals on issues ranging from housing, family law, domestic violence, taxes, consumer protection, government benefits, criminal defense, special education, immigration, and bankruptcy.

Harvard Dental Center Teaching Practice

The Harvard School of Dental Medicine (HSDM) provides a public facing dental practice where care is provided by predoctoral students under the supervision of HSDM faculty. Services in the teaching practice are open to the public and offered at 30–40 percent less than fees typical of a private dental practice.

Summer Youth Employment Program

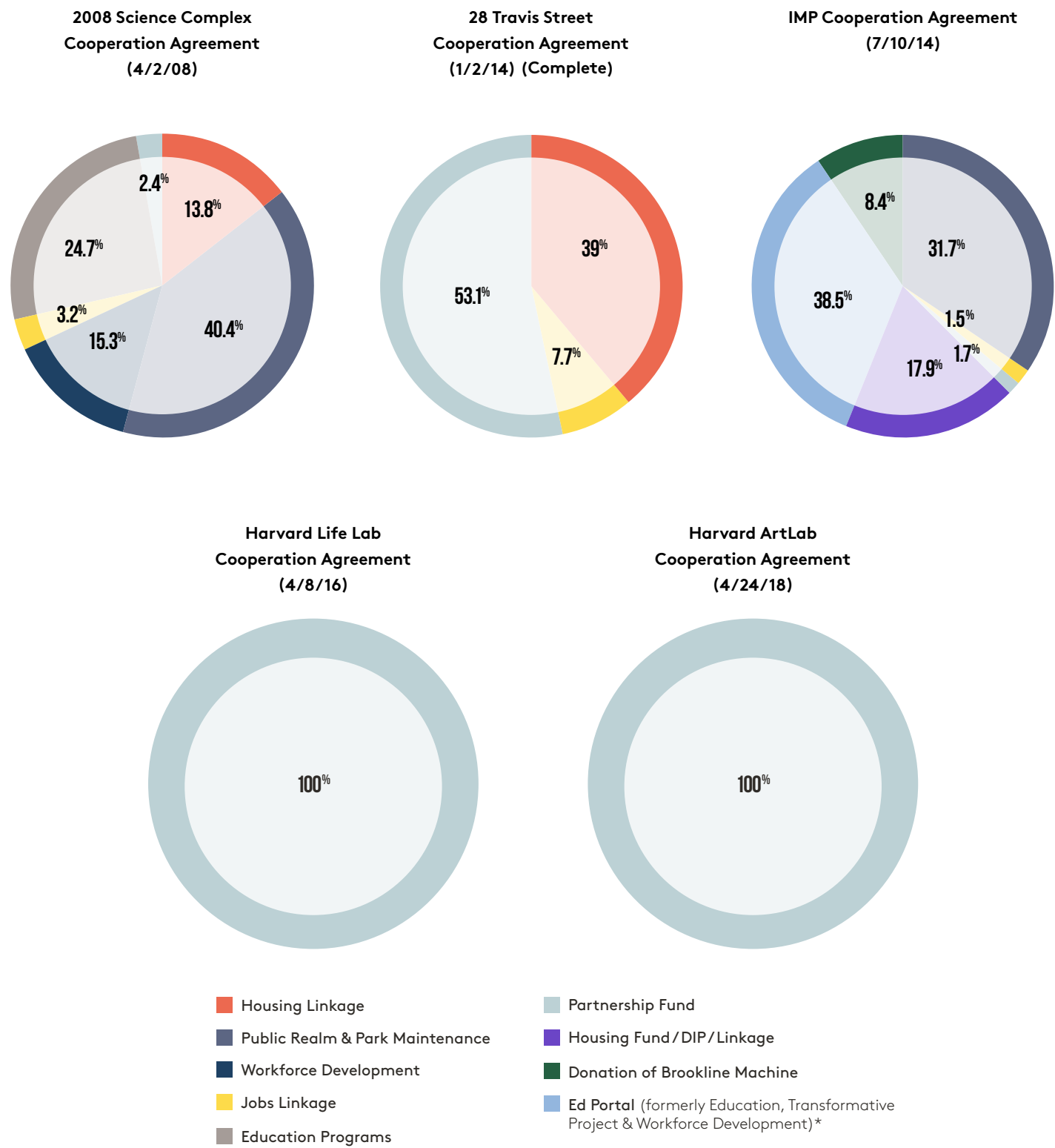
In partnership with the Mayor’s Summer Jobs Program in Boston and the Private Industry Council, the Harvard Summer Youth Employment Program hires Boston teens for six-week summer jobs in various office positions and as lab and library assistants across Harvard University. In addition to earning money, teens participate in job shadowing days and weekly educational seminars aimed at preparing them for both future careers and further education.

Supporting Boston-based Nonprofit Organizations

Harvard supports the work of several Boston-based nonprofit organizations that serve residents in the City of Boston. In FY21, the University’s support included nonprofits focused on the arts, economic and community development, youth programming, health and wellbeing, as well as services for the elderly.

Budget Overview: Active Cooperation Agreements

Spending through 6/30/2022



*Ed Portal reflects spending in the categories of Education, Transformative Project, and Workforce Development lines as reported in previous years. These categories reflect on the operations of the Harvard Ed Portal.

2008 SCIENCE COMPLEX COOPERATION AGREEMENT FUND

CATEGORIES	2008 COOPERATION AGREEMENT FUND	SPENT THROUGH JUNE 30, 2022	REMAINING BALANCE
Housing Linkage	3,848,430	3,334,749	513,681
Public Realm	9,700,000		624,801
Portsmouth Park		60,000	
Western Ave Sidewalk and Trees		1,238,498	
Barry's Corner Imp & Grove		1,448,016	
Farmer's Market		225,155	
Library Park		3,203,530	
Rena Path and Park		2,200,000	
Longfellow Park		700,000	
Workforce Development	3,670,000	3,691,708	(21,708)
Jobs Linkage	767,730	767,730	-
Education Program	4,786,000	5,960,998	(1,174,998)
Partnership Fund	500,000	589,231	(89,231)
Library Park Maintenance	2,200,000	640,689	1,559,311
TOTAL	\$25,472,160	\$23,060,305	\$1,411,856

28 TRAVIS STREET COOPERATION AGREEMENT FUND (COMPLETE)

CATEGORIES	28 TRAVIS STREET AGREEMENT FUND	SPENT THROUGH JUNE 30, 2022	REMAINING BALANCE
Housing Linkage	413,300	415,449	(2,149)
Jobs Linkage	82,879	82,879	-
Partnership Fund (FY14-FY18)	554,000	565,088	(11,088)
TOTAL	\$1,050,179	\$1,063,416	(\$13,237)

HARVARD LIFE LAB COOPERATION AGREEMENT FUND (COMPLETE)

CATEGORIES	2016 LIFE LAB COOPERATION AGREEMENT FUND	SPENT THROUGH JUNE 30, 2022	REMAINING BALANCE
BPS Contribution	60,000	84,158	(24,158)
TOTAL	\$60,000	\$84,158	-

2014 IMP COOPERATION AGREEMENT FUND

CATEGORIES	2014 IMP COOPERATION AGREEMENT FUND	SPENT THROUGH JUNE 30, 2022	REMAINING BALANCE
Public Realm	9,750,000		2,243,957
Flexible Fund		3,486,192	
SFR			
Study		169,851	
Two Crossings		3,350,000	
Everett Street Contribution		500,000	
Ray Mellone Park Maintenance			
Jobs Linkage	2,000,000	366,375	1,633,625
Partnership Fund (FY19-FY23)	500,000	409,880	90,120
Housing Fund	3,000,000	3,000,000	-
DIP/Linkage	11,000,000	1,274,604	9,725,396
Donation of Brookline Machine Site	2,000,000	2,000,000	-
Ed Portal (formerly Education, Transformative Project & Workforce Development) *	14,750,000	9,100,705	5,649,295
Education	4,500,000		
Transformative Project	8,250,000		
Workforce Development	2,000,000		

TOTAL	\$43,000,000	\$23,630,607	\$19,369,393
-------	--------------	--------------	--------------

*Ed Portal combines spending in the categories of Education, Transformative Project, and Workforce Development lines as reported in previous years.

These categories reflect on the operations of the Harvard Ed Portal.

ARTLAB COOPERATION AGREEMENT FUND

CATEGORIES	ARTLAB COOPERATION AGREEMENT FUND	SPENT THROUGH JUNE 30, 2022	REMAINING BALANCE
Cultural Fund Contribution	50,000	50,000	-
TOTAL	\$50,000	\$50,000	\$0

Status Update: Active Cooperation Agreements

Through 6/30/2022

SCIENCE COMPLEX COOPERATION AGREEMENT (SIGNED 4/2/08)* *Cooperation Agreement amended and restated 6/14/17 as part of Science and Engineering Complex project approval.			
Description	Budget	Obligation and Timing	Status
TRANSPORTATION ACCESS PLAN AGREEMENT			
Develop Transportation Access Plan Agreement		Science and Engineering Complex (SEC) project requires a TAPA prior to opening.	Complete.
TRANSPORTATION-RELATED COMMITMENTS			
Pedestrian and Bicycle Access Improvements		Implement measures to facilitate walking and bicycling access.	Complete.
Transit Improvements: Public Transit		Work with MBTA to develop recommendations for improvements to service in the neighborhood.	Complete.
Transit Improvements: Shuttle Service		Expand connections between Harvard campuses.	Complete.
Transit Improvements: Expanded Shuttle Service		Harvard to study public access to Harvard shuttle services.	Complete. Harvard shuttle opened to public as part of 28 Travis Street project.
Transportation Demand Management Program		Implement TDM program for project users.	Complete. All SEC Harvard faculty, staff, and students are eligible for Harvard's Commuter Choice program
Roadway Infrastructure Improvements		Construct new roadways as part of project.	Complete.
LINKAGE			
Housing	\$3,334,779	Annual payments began in 2011.	Complete.
Jobs	\$667,749.50	Payments made in 2009 & 2010.	Complete.
PILOT			
Negotiate PILOT agreement		Meet annually with City of Boston to discuss PILOT.	Complete and Ongoing. Harvard engages in regular discussions with the City of Boston as it aims to strike a balance between direct programming and reliable financial contributions that support basic city services and enhance the quality of life for Boston residents.
PUBLIC REALM IMPROVEMENTS			
Portsmouth Park	\$60,000	Fund improvements to Portsmouth Park.	Complete. Check issued to Parks Department in 2006.
Western Avenue Sidewalk and Tree Plantings	\$1,200,000	Improve Western Avenue through new sidewalks and tree plantings.	Complete.
Barry's Corner Improvements	\$1,800,000	Provide landscaping and streetscape improvements, including Ed Portal landscape and Citgo landscape.	Complete and Ongoing. The remaining budget is ~\$350,000.
Longfellow Path	\$700,000	Construct Longfellow Path. Due at Occupancy Permit for SEC.	Complete.
Rena Path	\$700,000	Construct Rena Path. Due at Occupancy Permit for SEC.	Complete.

SCIENCE COMPLEX COOPERATION AGREEMENT (SIGNED 4/2/08)* *Cooperation Agreement amended and restated 6/14/17 as part of Science and Engineering Complex project approval.			
Description	Budget	Obligation and Timing	Status
Public Events	\$240,000 (\$24,000/year)	Program public events in Barry's Corner area.	Complete and Ongoing.
Library Park and Maintenance for 10 years	Total of \$5,700,000	Design and build one-acre park. Maintain park for 10 years.	Complete.
Rena Park Design and Interim Improvements	\$1,500,000	Due at Occupancy Permit for SEC.	Complete.
Stadium Way and Rena Street Extension		Due at Occupancy Permit for SEC.	The sections of Stadium Way and Rena Street Extension (now called Science Drive) are complete.
Design and reconstruct Western Avenue (east of Barry's Corner)		Design by 2011. Construction by April 2018.	Ongoing. The first phase of the Western Avenue improvements (Academic Way to Hague Street) is complete.
Design and reconstruct North Harvard Street (north of Barry's Corner)		Design by 2011. Construction by April 2018.	Complete.
Significant Improvement of Properties		Replacement and removal of fences and planting trees.	Complete.
Additional interim public realm improvements in Barry's Corner		Provide additional improvements by December 31, 2013.	Complete.
SURVEY/NEEDS ASSESSMENT			
Conduct Survey/Needs Assessment	\$500,000	Conduct Survey/Needs Assessment.	Complete. Conducted survey in 2008.
EDUCATION			
Create and fund Ed Portal		Design, build, and fund Ed Portal.	Complete. Ed Portal opened in July 2008.
Computer Lab at Ed Portal	\$100,000	Build computer lab at Ed Portal.	Complete.
Ed Portal Coordinator		Hire staff person.	Complete.
Form Ed Portal Advisory Board		Form Ed Portal Advisory Board.	Complete.
Programming	\$1,100,000	Provide programming for the Ed Portal including tutoring, mentoring, Secondary School Scholarships, and Summer Athletic Camps Scholarships.	Complete.
Gardner School	\$120,000	Partner with the Gardner School for ten years of activities.	Complete.
Adult Education	\$215,000	Continue and expand adult education programs including Allston-Brighton community scholars, new lecture series, and computer teaching classroom.	Complete.
Outreach	\$250,000 over 10 years	Provide updates through website, letters, Allston Update, Ed Portal flyers, and emails.	Complete.

SCIENCE COMPLEX COOPERATION AGREEMENT (SIGNED 4/2/08)* *Cooperation Agreement amended and restated 6/14/17 as part of Science and Engineering Complex project approval.			
Description	Budget	Obligation and Timing	Status
PARTNERSHIP FUND			
Partnership Fund	\$500,000 (\$100,000/ year)	Checks issued to BRA annually, 2008-2013.	Complete.
EMPLOYMENT			
Construction Employment		Prepare Boston Residents Construction Employment Plan.	Complete. Signed 3/8/17.
Permanent Employment		Prepare MOU/First Source Agreement.	Complete. Signed 4/9/08.
Workforce Program Development	\$200,000	Develop workforce development programs.	Ongoing. Year 10 Complete.
Rent for Resource Center	\$600,000	Provide in-kind rent for 2009 through 2019.	Complete. The Career Resource Center closed in 2015 and the programs were moved to the new Harvard Ed Portal at 224 Western Avenue. The remaining in-kind rent is supporting the Workforce Development program at the Harvard Ed Portal.
Operation of Resource Center	\$1,000,000	Fund Operation of Resource Center for 10 years.	Complete. The Career Center was closed in 2015 and a Workforce Development specialist was hired to work out of the Harvard Ed Portal. This work continues in the Ed Portal. See Appendix D for complete programming list.
Human Resource staff person		Hire staff person.	Complete.
Advertising of workforce programs	\$50,000	Advertise workforce programs.	This has been rolled into the Ed Portal’s outreach and marketing efforts.
Workforce Development Classes (Computer Classes)	\$1,000,000 (\$100,000/ year)	Offer workforce development classes for 10 years.	Complete.
LONG TERM PARTNERSHIP			
Evaluate options for a transformative project		Transformative project evaluation to happen prior to filing a new IMP.	Complete. Transformative project evaluation was included in 2013 IMP.
Collaborate on planning West of Barry’s Corner.		Participate in City’s Community Wide Planning process.	Complete. In addition, Harvard is currently participating in the City’s ongoing Western Avenue Corridor Study and Rezoning process.
OTHER			
Contractor Pre-Apprenticeship Program	\$30,000/year (total of 120K)	Provide 5 slots/year.	This program has been on hold for the last 3 summers. It will be restarted this year.
Retail Use Restriction		Use best efforts to lease retail space to local businesses which are retail and restaurant uses.	Complete.
Day Care Facilities	Valued at \$450,000 over 10 years		Upon opening new childcare at SEC, 15% of slots will be made available to Allston-Brighton residents.
Construction Management Plan		Prior to issuance of a full building permit.	Complete.
Wireless Communications		Review if roof of Science is suitable location for wireless communications equipment.	The Project team has determined that the rooftop of the SEC is not a suitable location for wireless communications equipment.

28 TRAVIS STREET COOPERATION AGREEMENT (SIGNED 1/2/14)			
Description	Budget	Obligation and Timing	Status
Submit Construction Management Plan		Submit CMP.	Complete.
Submit a Transportation Access Plan Agreement		Submit TAPA.	Complete.
Pay linkage payments	Approximately \$500,000		Complete.
Construction Employment		Prepare Boston Residents Construction Employment Plan.	Complete.
Voluntary Employment Opportunity Plan		Prepare Voluntary Employment Opportunity Plan.	Complete.
Maintenance and Operation		Keep the site in good and safe condition and repair.	Ongoing.
No Entrance/Exit on Travis Street		Keep Travis Street entrance closed.	Complete.
Rena Park Planning	Funded through Science Cooperation Agreement	Begin planning and identify implementable improvements that will begin construction in 2014.	Complete.
Prepare Comprehensive Support Services Plan		Prepare Support Services Plan for inclusion in IMP.	Complete. Included in IMP.
Relocate services from 28 Travis		Implement recommendations from Comprehensive Support Services Plan.	Complete. Memo on initial assessment provided to BPDA on 12/23/19.
Restrict building use from 12:00 midnight to 6:00 AM		Restriction in place with opening of building.	Ongoing.
Extend Partnership Fund	\$500,000 (\$100,000/ year for five years)	Extend Partnership Fund grants for five years, from 2013 through 2018.	Complete.
Provide public access to Harvard shuttle system		Harvard to study public access to Harvard shuttle services.	Complete.
Identify location for relocated Ed Portal		Identify location for relocated Ed Portal.	Complete.

IMP COOPERATION AGREEMENT (SIGNED 7/10/14)			
Description	Budget	Obligation and Timing	Status
PUBLIC REALM			
Everett Street Improvements	\$500,000	Provide funding for City-led project for improvements to Everett Street.	Complete.
Soldiers Field Road Crossings	\$150,000 for study and \$3,350,000 for implementation	Study phase to be conducted in 2014 to be followed by an implementation phase.	Complete and Ongoing. Payment provided to City of Boston. Administration of the project and crossing design by DCR remains ongoing.
Maintenance of Ray Mellone Park	\$400,000	Extend maintenance of Ray Mellone Park from 2021 through 2025.	Ongoing.
Flexible Fund	\$5,350,000 over 10 years	Develop flexible fund for public realm improvements. Funds will be spent over ten years but there is a two-year planning period.	Ongoing.

IMP COOPERATION AGREEMENT (SIGNED 7/10/14)			
Description	Budget	Obligation and Timing	Status
Interim improvements to Grove	Funded through Science Cooperation Agreement	Make immediate interim improvements to the Grove.	Complete. Grove opened in Summer 2014.
Commence Rena Park planning	\$1,500,000 budget from Science Cooperation Agreement	Continue to plan and identify implementable improvements that will begin construction in 2014.	Complete.
Greenway		Conduct planning process in 2014 for exploring strategies for interim implementation of the Greenway.	Complete. Memo on Greenway Planning submitted to BPDA on 12/15/14.
EDUCATION			
Ed Portal	\$4,000,000 total	Continue to operate and fund the Ed Portal through 2024.	Ongoing.
Programming		Extend academic and enrichment programming (including Mentoring and Community Scholarships) in the Ed Portal through 2024.	Ongoing.
Gardner Pilot Academy		Extend partnership program with Gardner Pilot Academy through 2024.	Ongoing.
Adult Education		Extend Adult Education programs through 2024.	Ongoing.
Public Information and Outreach		Extend public information and outreach program through 2024.	Ongoing.
Contribution to BPS	\$500,000	Contribution to BPS in support of a capital project at the GPA.	Complete.
WORKFORCE DEVELOPMENT			
Workforce Development	\$2,000,000	Extend Workforce Development program from Science Cooperation Agreement through 2024.	Ongoing. Services supporting workforce development in the Allston-Brighton neighborhood will continue at the Harvard Ed Portal.
Jobs Linkage	\$2,000,000		Ongoing. Payments are part of each IMP project that is required to pay linkage.
PARTNERSHIP FUND			
Harvard Allston Partnership Fund	\$500,000	Five-year extension of Partnership Fund for 2019-2023.	Ongoing.
HOUSING FUND			
Harvard Allston Housing Fund		Contribute \$3,000,000 to assist third-party organization in housing stabilization.	Complete.
HOUSING LINKAGE			
Housing Linkage			Ongoing. Payments are part of each IMP project that is required to pay linkage.

IMP COOPERATION AGREEMENT (SIGNED 7/10/14)			
Description	Budget	Obligation and Timing	Status
DONATION OF BROOKLINE MACHINE			
Donation of Brookline Machine site			Complete.
TRANSFORMATIVE PROJECT			
Physical Space & Operations	\$8,250,000	Relocate Ed Portal to 224 Western and transform space into Transformative Project by the end of 2015.	Complete.
Programming		Programs including expanded marquee Ed Portal programming, AllstonX, Health & Wellness, Arts, Public School Partnerships, Athletics, North Allston/ North Brighton Workforce and Business Development Program.	Ongoing. See Appendix D for complete program list.
Workforce and Economic Development		Enhance Workforce Collaborative Programs.	Ongoing. See Appendix D for complete program list.
DEVELOPMENT AGREEMENTS			
PILOT		Extend existing PILOT commitment to new IMP projects.	Complete and Ongoing. Harvard engages in regular discussions with the City of Boston as it aims to strike a balance between direct programming and reliable financial contributions that support basic city services and enhance the quality of life for Boston residents.
Transportation Access Plan Agreement		Prepare TAPA for each IMP project.	Institutional TAPA signed.
Construction Management Plan		Prepare CMP for each IMP project.	Institutional CMP Guidelines prepared. CMPs submitted for individual IMP projects.
Construction Employment		Prepare Boston Residents Construction Employment Plan for each IMP project.	Part of each project. Agreements submitted for individual IMP projects.
Permanent Employment		Prepare Permanent Jobs Agreements for each IMP project.	Part of each project. Agreements submitted for individual IMP projects.
TRANSPORTATION			
Design of Stadium Way		Develop 25% design of Stadium Way by November 2015.	Complete.
Evaluate construction support area		Evaluate construction support area.	Ongoing.
Special events study		Prepare study by April 30, 2014.	Complete.
Study implementation of parking reserve		Prepare parking analysis memo.	Complete.
Analysis of alternatives for surface parking		Prepare parking analysis memo.	Complete.
Extend TDM measures to tenants		Extend TDM measures to commercial tenants in Allston.	Complete. Harvard joined TMA on behalf of certain commercial tenants. Memo describing measures submitted to BTDA on 7/10/15.
Prepare transportation and parking analysis program, scope to be determined with BTDA		Scope of analysis is essentially the items listed above.	Complete.
Assist BTDA in residential parking		Assist BTDA during 2014.	Complete. BTDA implemented additional residential permit parking.
ANNUAL REPORT			
Submit Annual Report		Annual report submitted to BPDA and Task Force.	Due by August 31 of each year.

HARVARD LIFE LAB COOPERATION AGREEMENT (SIGNED 4/8/16)			
Description	Budget	Obligation and Timing	Status
EDUCATION			
Programming		Programming of events at the Ed Portal and i-Lab.	Ongoing.
Laptop Access	\$60,000	Partner with BPS to provide a grant to fully fund the purchase of Chromebook laptops.	Complete.
PUBLIC REALM			
Ice Cream Social		Host an annual event for the Allston-Brighton community for five years.	Icecream social was canceled due to COVID-19 pandemic. 2 instances of icecream social event remain.

HARVARD ARTLAB COOPERATION AGREEMENT (SIGNED 4/24/18)			
Description	Budget	Obligation and Timing	Status
Support for Local Allston Brighton Artists	\$10,000 per year for five years	Starting in 2018, City of Boston grant program to support professional development and participatory arts learning experiences.	Complete.
Community Educational Programming		Provide programming for five years.	Year 3 complete. The ArtLab “soft” opened in Spring 2019. Official opening, including community opening event, in Fall 2019.

Housing Stabilization Fund Update

Prepared By Allston Brighton Community Development Corporation

ALLSTON ESPLANADE LLC	
STATEMENT OF ACTIVITIES	
JULY 2021 - JUNE 2022	
INCOME	
Grant funds	118,194
Interest	503
TOTAL INCOME	118,697
EXPENSE	
Staffing	17,797
Professional services	9,200
Fees	530
Maintenance	2,939
Loss on sales	88,231
TOTAL EXPENSE	118,697
SURPLUS/(DEFICIT)	0

STATEMENT OF FINANCIAL POSITION	
JUNE 30, 2022	
ASSETS	
CURRENT ASSETS:	
Cash-program operating account	236,859
Cash-emergency account	98,563
Cash and cash equivalents-reserve account	1,025,672
Deposits	60,000
Prepaid expenses	7,240
TOTAL CURRENT ASSETS	1,428,334
TOTAL ASSETS	1,428,334
LIABILITIES AND NET ASSETS	
CURRENT LIABILITIES:	
Accounts payable and accrued expenses	3,242
Due to related parties (ABCDC)	7,457
TOTAL CURRENT LIABILITIES	10,699
NET ASSETS:	
Net assets without donor restrictions	17,808
Net assets with donor restrictions	1,518,021
Change in net assets year-to-date	(118,194)
TOTAL NET ASSETS	1,417,635
TOTAL LIABILITIES & NET ASSETS	1,428,334

Harvard University supports the Housing Stabilization Fund. Since the start of the program, 19 units have been purchased and 24 units have been sold.

Harvard Ed Portal Community Programming Catalog

July 1, 2021 – June 30, 2022

Ongoing and Offered Throughout the Year

- Athletic memberships for Ed Portal members
- Job Search and Career Planning Coaching
- Monday Job Seekers Connections:
 - Beyond the Job Search: Hitting the Career Reset Button
 - Boosting Your Confidence and Presence
 - Building Resilience
 - Career Transition - Navigating the Education & Training Ecosystem
 - Career Transitions
 - Conveying Accomplishments on Your Resume
 - Create a Resume People Actually Read
 - Diversity, Equity, and Inclusion with Adesuwa Igbineweka
 - Harvard University Hiring Process
 - Hitting the Career Reset Button
 - Intentional Serendipity
 - Interview Skills
 - Monday Job Seekers Connection with Harvard Talent Acquisition
 - Open Discussion
 - Overcome Job Search Challenges
 - Personal Branding & Marketing Yourself
 - Personal Branding and Marketing Yourself
 - Post-pandemic Job Search with Sharon Edwards
 - Reconnecting to Your Career Journey
 - Soft Skills & Their Importance
 - Staying Motivated to Meet Your Career Goals
 - Tell Me About Yourself
 - The Journey of a Job Seeker Panel Discussion
 - The Power of Groupthink
 - Turning Ageism into Sageism
 - Using Online Learning to Benefit You and Your Career
 - Writing Effective Cover Letters and Resumes
- Yoga
 - Beginner Yoga
 - Autumn Yoga
 - Spring Yoga
 - Yoga Nidra
- Yoga for Burnout
- Yoga for the New Year Blues
- Strengthening Classes
- Youth Programing
 - 1st & 2nd Grade Club
 - A.R.T Scholarships
 - Academic Support
 - Art Making with Imagination, Joy & Community
 - Connections Club
 - Movement & Wellness Club
- Mentoring Program
- Programs Embedded in Boston Public Schools
- GPA After School Programing
 - 1st Grade Club
 - 2nd Grade Club
 - 4th Grade Science Club
 - Middle School Sustainability Club
- Brighton High School
 - Ceramics Classes
 - Black Excellence Project
 - Men of Honor
 - Computer Skills (Fall)
 - High School Lab Skills Program (Spring)
- Boston Green Academy
 - Financial Literacy (Spring)
 - Science Storytelling (Spring)
- Allston Brighton Scholarships to the Harvard Extension School (20 scholarships)
- Crossings Gallery Exhibits
 - Monuments Reimagined – Public Art in Our Communities
 - Frequencies
 - Harvard Staff Art Show
 - Running in the Rain
 - Postcards from Allston
- Mural: Moshup
- Artist Pipeline Program (Spring launch)

July 2021

- Yoga & Movement Program for GPA Educators (Four Sessions)
- Youth Programing – Virtual Summer Explorations (Three 1-week sessions)
- Programing for 1st-2nd Grade
- Programing for 3rd-5th Grade

- Programing for 6th-8th Grade
- Concerts in the Common: Ezekiel's Wheels and The 94s
- The Folding Chair: Book Discussion on Leadership & Ambition
- The Post-Pandemic Workplace

August 2021

- Concerts in the Common: Marcus Santos and Grooversity
- Vendor Information Session: Allston-Brighton Winter Market
- Yoga & Movement Program for GPA Educators

September 2021

- Concerts in the Common: BeanTown Lockers
- Sights + Sounds of Allston-Brighton: Community Workshop
- Business Plan Development for Small Businesses & Nonprofits

October 2021

- Families and Children: Team Up and Learn Together (Four workshops)
- Monuments Reimagined: Public Art in Our Communities
- Concerts in the Common: Odaiko New England
- College Apps 101: The Basics
- Computer Skills Workshop for GPA Adult Education Program Participants
- Strategic Thinking for Small Businesses & Nonprofits

November 2021

- Sights + Sounds of Allston-Brighton: Community Workshop
- 2021 Allston-Brighton Winter Market (Virtual) (Offered Nov. 15 – 30)
- Families and Children: Team Up and Learn Together (Two workshops)
- Wellness Wednesdays: Get Up and Get Moving
- College Apps 101: The Types of Schools
- College Apps 101: The Essay

- College Apps 101: The Application
- College Apps 101: The Possible Pathways
- Small Business Saturday is Coming—Is Your Business Ready?
- Rebuild Cash Flow Post-Pandemic for Small Businesses
- The Relationship Between Cash and Operations for Small Businesses

December 2021

- 2021 Allston-Brighton Winter Market (Virtual) (Offered all month)
- Keep Your Friends Close, But Your Mental Health Closer (Two sessions)
- How to Build Genuine Relationships on LinkedIn
- Wellness Wednesdays: Get Up and Get Moving
- Increase Approvals of Financing Capital for Small Businesses
- Dashboards and Financial Analysis for Small Businesses
- Maintaining Job Search Momentum through the Holidays

January 2022

- Allston-Brighton Winter Market (Virtual) (Offered Jan 1–15)
- Strengthening for the New Year (Three sessions)
- Wellness Wednesdays: Get Up and Get Moving
- Identifying Your Core Professional Values in a Career Transition

February 2022

- Building Career Connections: Intro to American Networking
- Building Career Connections: Networking Tips with Sabrina Woods
- Building Career Connections: The Informational Interview
- Leading People (Four Sessions)
- Technical Support Sessions for McNamara House Residents (Two sessions)

March 2022

- Unmute Yourself: Improv Skills for Better Communication and Networking
- Harvard Staff Art Show at Crossings Gallery
- The Role of Emotional Intelligence in Successful Communication
- Technical Support Sessions for McNamara House Residents (Two sessions)
- Job Search Basics (Two sessions)
- Hack Your Creative Brand: Marketing Consultations for Local Artists
- Introduction to Zoom Workshop in Spanish & English

April 2022

- Harvard Staff Art Show at Crossings Gallery
- Culturally Responsive Interview Preparation
- Making Career Transitions: Communicate Your Value & Professional Identity
- Innovation and Creativity (Four sessions)
- Resume Writing Workshop
- MindMatters (Seven Sessions)
- Technical Support Sessions for McNamara House Residents (Three sessions)

May 2022

- Connecting the Dots: Financial Ratios for Small Business Owners
- Thrive vs. Survive: Financial Projections for Small Business Owners
- Budget vs. Forecast for Small Business Owners
- Financial Agility: Scenario Planning for Small Business Owners
- Making Career Transitions: Learn How to Communicate
- Exhibition Reception for “Running in the Rain”

- Technical Support Sessions for McNamara House Residents (One session)
- Work in Progress: Future Planning for Teens!

June 2022

- Spring Strengthening (Four sessions)
- Beginner Yoga 4 (Four sessions)
- Postcards from Allston Opening Celebration
- Product and Service Pricing for Small Businesses
- Culturally Responsive Interview Preparation
- Concerts in the Common: Ava Sophia
- Concerts in the Common: Kier Byrnes & Friends
- GPA Moving On 8th Grade Graduation Ceremony



HARVARD
UNIVERSITY

Public Affairs & Communications
114 Mount Auburn Street, 6th Floor
Cambridge, MA 02138
617-495-4955

[COMMUNITY.HARVARD.EDU](https://community.harvard.edu)
[EDPORTAL.HARVARD.EDU](https://edportal.harvard.edu)
[LEADLOCALLY.COMMUNITY.HARVARD.EDU](https://leadlocally.community.harvard.edu)